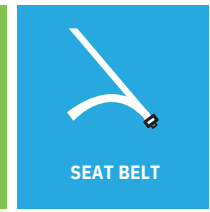


# Grandparents & Car Seat Safety



## Grandparents: The Key to a Safe Ride

Vehicles have changed in countless ways over the past five decades. Today's car seats are equipped with modern safety technology. When secured correctly, your child should be safe in your vehicle, even during a crash.

Installing car seats takes time, patience, and a little elbow grease. What might be physically easier for younger parents could prove frustrating for grandparents.

We are here to help you navigate this critical safety information. Read on for helpful car seat and booster seat information.

**BOOK NOW**



## Installation

Be sure to read the car seat's instruction manual, and call **225.251.4800** to schedule your free car seat education & installation appointment today!

1. Select a car seat that is right for the child's age and size.
2. Always put the car seat in the back seat. The back seat is the safest.
3. Install the car seat facing in the correct direction; rear-facing is recommended for as long as possible, until the child outgrows the seat's height and weight limits for rear-facing.
4. Make sure the car seat is installed at the correct angle.
5. Place the seat belt through the correct belt path OR install the seat using lower anchors and tethers. Make sure the seat belt is tightly locked using the vehicle's seat belt locking mechanism OR the car seat's lock-off.
6. When securing the child, the chest clip should be at armpit level, and straps should fit snugly.



## Need Help?

**SERVICES PROVIDED ARE FREE!**

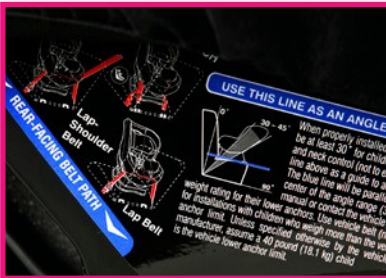
**CALL 225.251.4800 TO SCHEDULE  
YOUR FREE CAR SEAT EDUCATION &  
INSTALLATION APPOINTMENT TODAY!**

# Learn how to Safely Secure a Child in a Car Seat.

## Rear-Facing Car Seats



Make sure harness straps are in the slots **at or below** the child's shoulders and the chest clip is at armpit level. Straps should fit snugly.



Check for the correct belt path and angle.

## Forward-Facing Car Seats



Place the harness straps in the slots **at or above** the child's shoulders.



Check for the correct belt path.



Always use the tether on forward-facing car seats. Make sure it is attached to the vehicle's tether anchor and pulled tight. See your vehicle owner's manual to locate the tether anchors.

## Booster Seats



Make sure the seat belt fits securely over the child's hips and shoulder.

Read the instruction manual to ensure the correct fit.



## Seat Belts



A child is not ready to use a seat belt until they are tall enough to keep their backs against the seat and their feet flat on the floor.

**Keep all kids in the back seat until age 13.**

**BOOK NOW**

### Need Help?

**SERVICES PROVIDED ARE FREE!**

**CALL 225.251.4800 TO SCHEDULE YOUR FREE CAR SEAT EDUCATION & INSTALLATION APPOINTMENT TODAY!**

